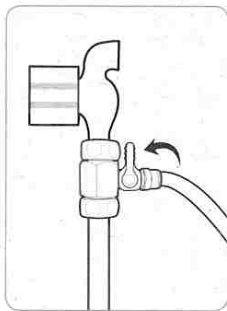


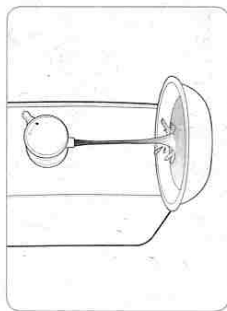
# CLEANING METHOD

## Cleaning the Storage tank

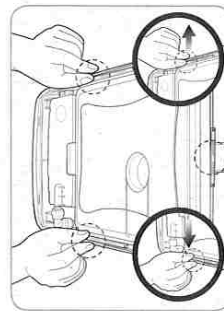
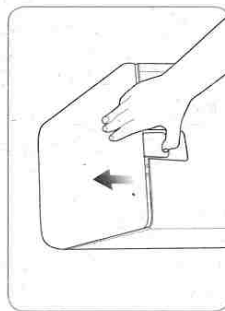
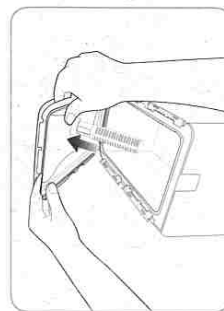
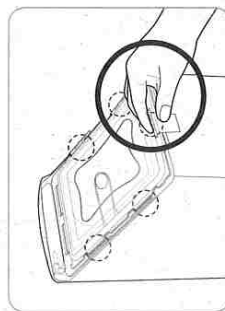
1. Lock the connection valve.



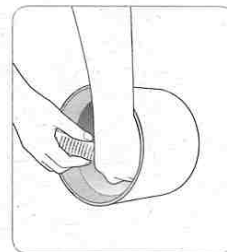
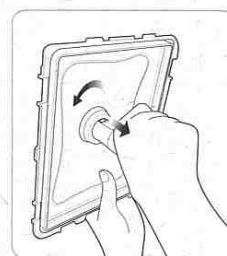
2. Use continuous dispensing to completely drain all water from inside the device (see p. 8).



3. Lift the latch at the back of the device to open the top cover. Open the clips (in 5 places) affixing the Storage tank and then open the Storage tank cover.



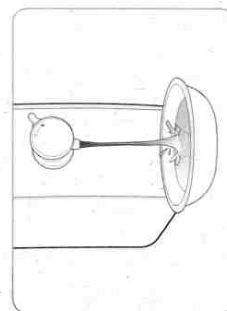
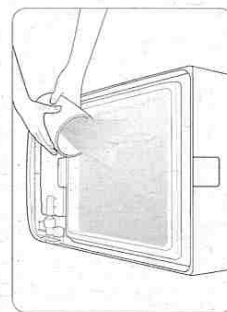
4. Remove the hygienic filter from the Storage tank cover and shake in purified water to clean, then reinstall.



5. Wipe the Storage tank surfaces with a soft cloth.

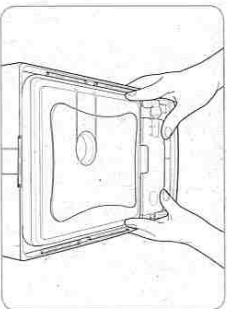
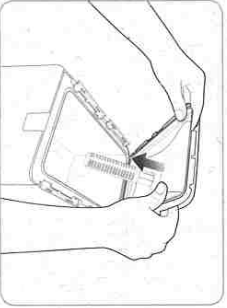


6. Rinse the Storage tank clean with water from the device, then completely drain it using continuous dispensing.

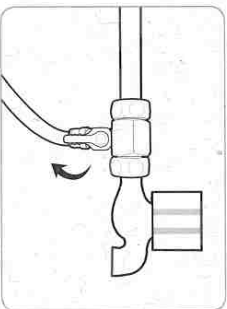
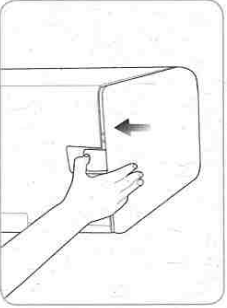


## CLEANING METHOD

7. Close the Storage tank cover and fasten the clips.



8. Close the rear cover and open the connection valve.



### Be cautious!

#### ■ Where to install I

Do not install the device in uneven places, humid or dusty places, places in direct sunlight, or places where water splashes directly.

#### ■ After installation

Be sure to use only after filtering and draining water at least 80 minutes after installation. (Drain purified water at least twice before use.)

#### ■ Where to install II

Install in a place where the floor is level and strong.

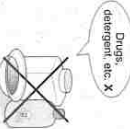
#### ■ Cold water pipe

Be sure to connect to the cold water pipe. (If you connect to the hot water pipe, the device filters may be damaged.)



Tips

- ▲ Completely close the Storage tank cover. Otherwise, insects or dirt may enter.
- ▲ Do not use chemicals or detergent when cleaning the Storage tank. If chemicals or detergent are not completely washed away, they may be hazardous to your health.
- Always keep the surrounding environment clean and clean the Storage tank about once every two months.



Tips

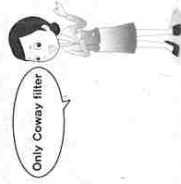
- Please consult a Coway installation technician for detailed instructions on installation for optimal product performance.
- ▲ Water used for the inspection process during production may remain inside the filter.
  - ▲ This device is not a secondhand product, so do not worry.
  - ▲ Do not reuse previously used water supply valves or hoses when installing the device.

# FILTER REPLACEMENT

## Filter Replacement

### Filter

The life of a water filtration device is its filters. If filters are not authorized or if authorized filters are used for too long, their performance may decrease and the device may not work properly. Replace with authorized filters according to the replacement cycle. A Coway Cody will visit to replace the filters.



### Filter replacement cycle

If you do not regularly replace filters, the quality of water from the device will decrease.

Predicted filter replacement cycles may vary depending on source water quality and amount of water used.

P-08L

Filter name	Recommended replacement cycle
Neo-Sense filter	6 months
Membrane filter (RO)	24 months
Plus Inno-Sense filter	18 months
Hygienic filter	12 months



### About the filter replacement cycle

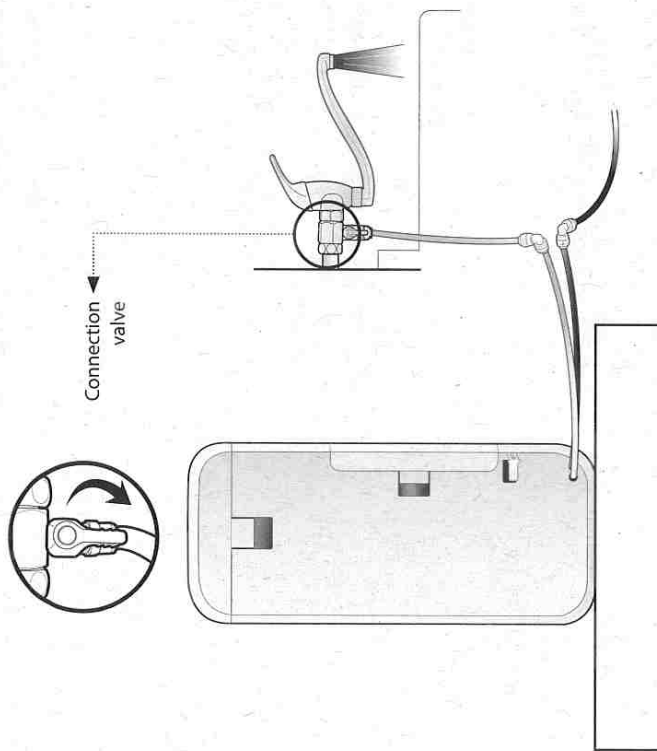
Each filter's recommended replacement cycle is calculated based on water supply quality.

For reference, the effective water capacity means the minimum treatment capacity for which contaminants can be effectively removed without cleaning, recycling, or replacing the inner filters, and recommended replacement cycles for individual filters may differ.



# INSTALLATION

## Follow the instruction for installation



Connect the inlet hose (orange) to the tap.  
Connect the outlet hose (blue).

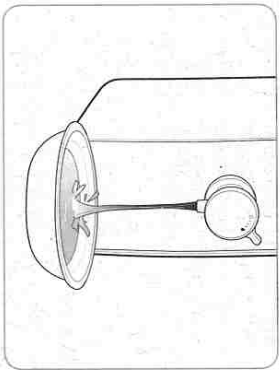
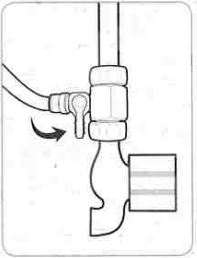
Outlet hose (blue) connection

Inlet hose (orange) connection

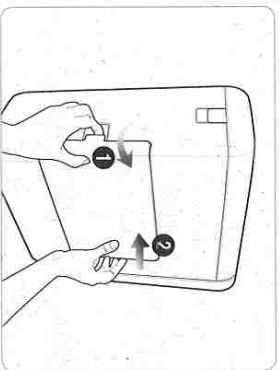
## FILTER REPLACEMENT

Replace the filters!

1. Lock the connection valve and completely drain all water from inside the device (see p. 8).



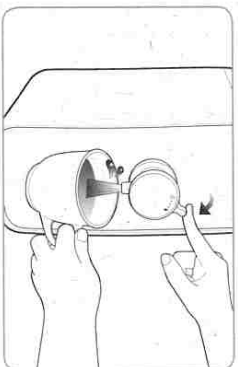
2. Open the product side cover.



## HOW TO USE

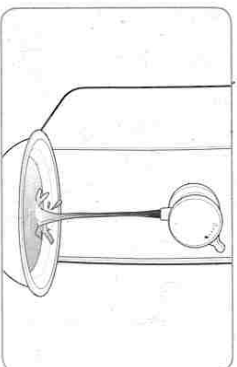
To Drink Room-Temperature Water

Turn the water dispensing lever clockwise to drink room-temperature water.



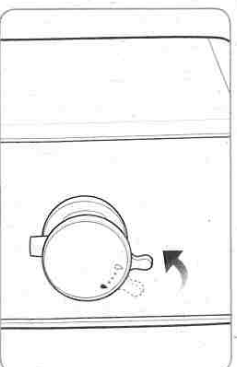
Large Volume Dispensing

To dispense water continuously, turn the water lever 45° clockwise to lock it in place.



To Lock Room-Temperature Water

Gently turn the water dispensing lever counter-clockwise to orient it upward to lock room-temperature water.



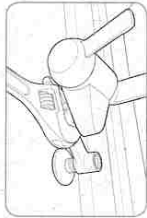
Tips

- Do not use excessive force to turn the water dispensing lever. There is a risk of damage.

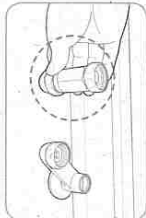
## INSTALLATION PRECAUTIONS

The summary for the proper installation of the water filtration device

1. Close main water supply valve to separate the faucet.

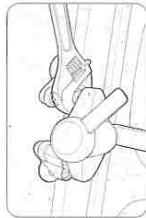


2. Apply the Teflon tape to the adaptor and fit it to the pipe.



▲ Do not turn the water pipe.

3. Connect the faucet with the adaptor.



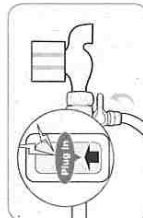
▲ Install the adapter with connector on the cold water pipe.

4. Connect 1/4 inch orange tubing with the connector on the adaptor.

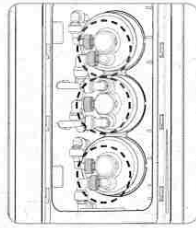


▲ Flush water through each filter at least 5 minutes before connection.

5. Open the feed valve to supply water to the filtration system.



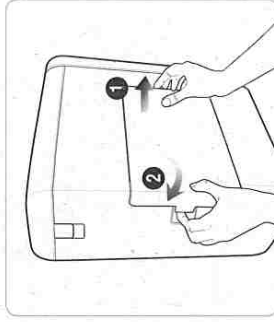
3. Remove fittings attached to the filter you wish to replace, and then replace the filter.



Tips

▲ After replacing the filter, connect fittings and hoses precisely and check that there are no leaks. Be sure to first drain purified water.

4. Close the side cover.



Tips

▲ Use new filters only after washing them.

- Neo-Sense filter: Install after washing with tap water for about 1 minute.
- Plus Inno-Sense filter: Install with no separate washing.
- Membrane filter (RO): Install the filtered water valve and install the filter after washing with tap water for about 5 minutes.



Tips

▲ Contact a customer service center to replace fittings, tubing and faucets after 5 years of use free of charge.

## TROUBLESHOOTING

The product may not operate correctly for minor reasons or due to unfamiliarity with how to use the product that are not product malfunctions. In such cases, the problem can be solved easily without the need to going to a service center if the following items are checked. Check the following, then contact a service center if your problem remains unresolved.

Problem	Check	Possible Solutions
The water has a poor aftertaste.	<ul style="list-style-type: none"> <li>• Have you cleaned the Storage tank?</li> <li>• The water device has not been used for a very long time.</li> </ul>	<ul style="list-style-type: none"> <li>• Clean the Storage tank.</li> <li>• Discard stored water and clean the Storage tank.</li> </ul>
Water doesn't come out.	<ul style="list-style-type: none"> <li>• Is it time to replace a filter?</li> </ul>	<ul style="list-style-type: none"> <li>• Request a filter replacement.</li> </ul>
	<ul style="list-style-type: none"> <li>• Is the water cut off or is the connection valve locked?</li> <li>• The faucet seems to be broken.</li> </ul>	<ul style="list-style-type: none"> <li>• Open the connection valve.</li> <li>• Request service.</li> </ul>
The quantity of room-temperature water has suddenly decreased.	<ul style="list-style-type: none"> <li>• Is it past time to replace the filter?</li> </ul>	<ul style="list-style-type: none"> <li>• Request a filter replacement.</li> </ul>
	<ul style="list-style-type: none"> <li>• Is it time to replace a filter?</li> <li>• Is the connection valve locked?</li> </ul>	<ul style="list-style-type: none"> <li>• Request a filter replacement.</li> <li>• Open the connection valve.</li> </ul>
	<ul style="list-style-type: none"> <li>• Did the temperature of the source water suddenly drop?</li> </ul>	<ul style="list-style-type: none"> <li>• If the water temperature drops, the quantity of room-temperature water decreases.</li> </ul>
A leak has occurred.	<ul style="list-style-type: none"> <li>• Is there water flowing inside the device or the Storage tank cover?</li> </ul>	<ul style="list-style-type: none"> <li>• Open the top cover to check. Lock the connection valve and then request service.</li> </ul>

## WATER FILTRATION PROCESS

The life of a water filtration device is its filters. If filters are not authorized or if authorized filters are used for too long, their performance may decrease. The filter method for managing drinking water is explained below.

### 5-step water filtering system

#### STEP 1, 2 : NEO-SENSE FILTER

This neo-sense filter has the functions to remove particulates, dissolved organic and inorganic impurities. It also has the function to remove chlorine, volatile organic compounds (VOCs).

#### STEP 3 : RO MEMBRANE FILTER

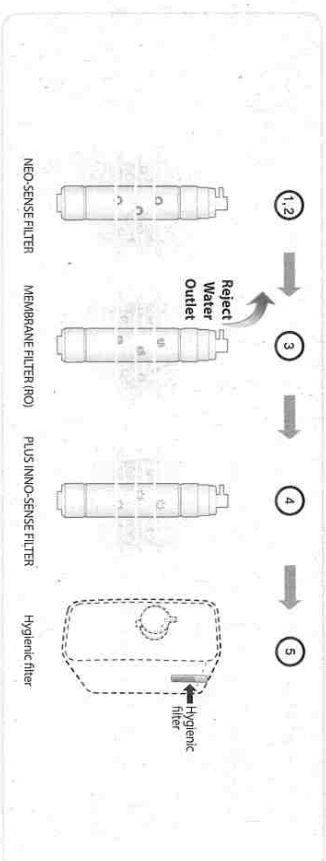
RO membrane filter has the function to remove water contaminants such as heavy metals, waterborne microorganisms and harmful organic chemicals etc. The water concentrated the harmful material is flowed out through the daily life water hose as the daily life water.

#### STEP 4 : PLUS INNO-SENSE FILTER

This Plus Inno-sense filter has the functions to remove small induction material and to improve taste of water.

#### STEP 5 : HYGIENIC FILTER\*

This Hygienic Filter has the function to control microorganism propagation in water.



#### Uses of reject water

- The reject water should be used for cleaning the restroom, the house, clothes, or purposes other than drinking.
- Never use the reject water for drinking or cooking.



Tips

# SPECIFICATION

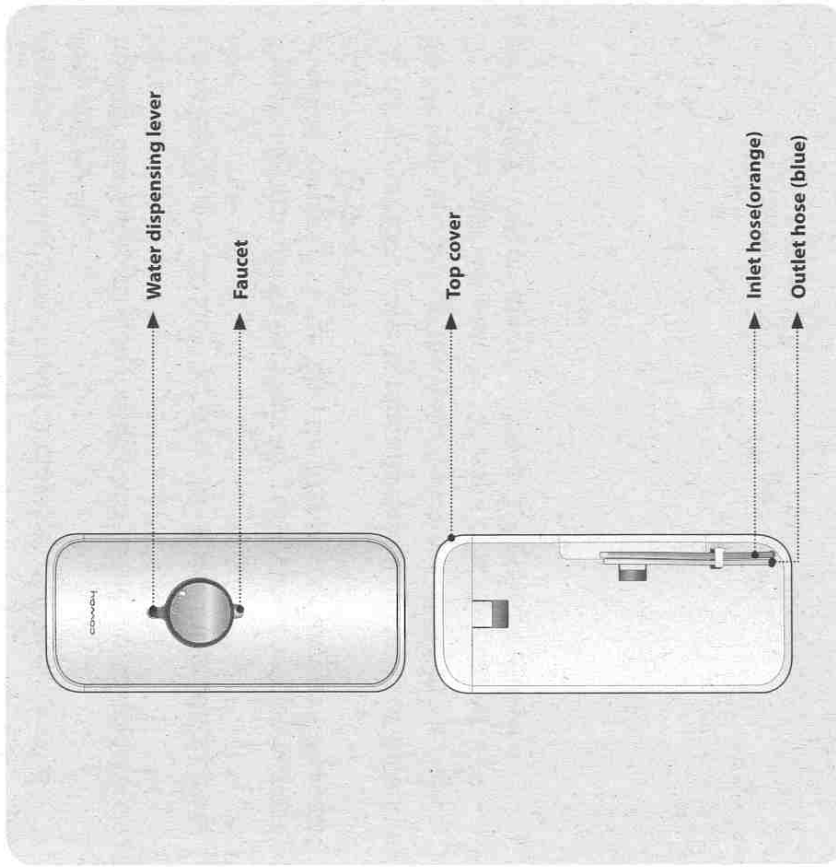
▶ Quality display to manage drinking water

<b>Product name</b>		<b>Coway water filtration device</b>
<b>Model name</b>		P-08L
<b>Filtration method</b>		Reverse osmosis method
<b>Collection rate</b>		50% (343 kPa, 25°C, NaCl 200 ppm)
<b>Main functions</b>		Water purification
<b>Storage tank capacity</b>		3.5 L
<b>Filter material</b>	Neo-Sense filter	Block activated carbon
	Membrane filter (RO)	Reverse osmosis filter
	Plus Inno-Sense filter	Block activated carbon, felt
	Hygienic filter	Hygienic balls
<b>Product size</b>		192 mm (width) x 430 mm (depth) x 434 mm (height)
<b>Net weight</b>		4.9 kg
<b>Effective water capacity</b>		5 400 L
<b>Daily water capacity</b>		132 L/d (NSF/ANSI 58 standard: 345 kPa, 25°C, NaCl 750 ppm)
<b>Operating pressure (tap water)</b>		138 kPa - 827 kPa
<b>Operating temperature</b>		5°C - 35°C

- ▶ Daily water quantity test results based on standard laboratory specifications. There may be variations due to changes in water pressure, temperature and quality at the installation location.
- ▶ The Storage tank capacity may differ slightly from the quantity of obtainable water due to the size of the Storage tank.
- ▶ Specifications may be changed slightly without prior notice to improve product performance.
- ▶ Collection rate refers to the amount of water that comes out compared to the amount that goes in.

# PARTS NAME

Front / Rear

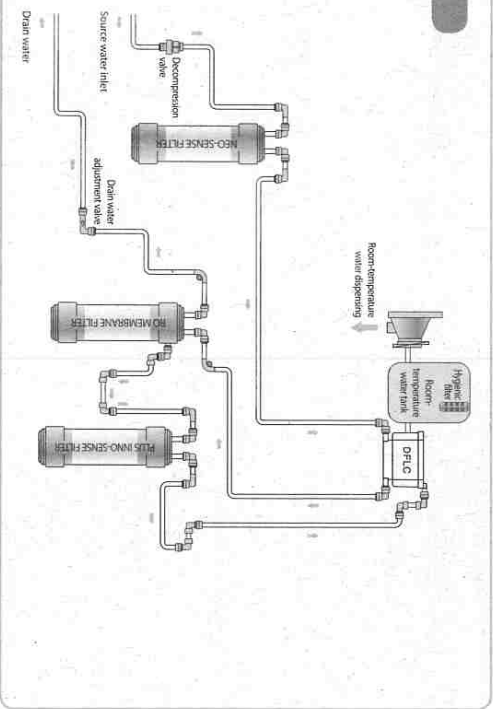


Accessories

- User's manual
- Hygienic filter
- Fitting/locking clip

## WATER FLOW DIAGRAM

P-08L



### ▲ Caution : If not observed, slight injury or property damage could occur.

- Device installation/use should comply with regulations for the relevant region.
- Replace filters according to the filter replacement cycle to drink clean water.
- Completely close the Storage tank cover inside the product before use.
- If you have not used this product for a long time, completely drain all water from the Storage tank, then empty of newly purified water once more before use.
- Do not use purified water to replace water in fish tanks or aquariums.
- Do not grab and pull on the water faucet or use it to lift the device.
- Do not use unknown water that has not been disinfected or cleansed of microorganisms before or after using the device.



## MEMO

## SAFETY INFORMATION

### Be careful to keep this safety information.

Please read this information to prevent property loss and ensure your safety.

### ▲ **Danger : If not observed, serious injury or even death could occur.**

- Do not install near electric heaters.
- If water leaks inside the device or pools around it, lock the water supply valve, then contact a service center.
- Do not put candles, lighters, etc. on top of this product.
- Do not put bowls of water, chemicals, food, small metal objects, or flammable materials on top of this product.

### ▲ **Warning : If not observed, serious injury or property damage could occur.**

- Do not use or store combustible gases or flammable materials near this product.
- Do not excessively impact or use excessive force on this product.
- Do not spray water directly on the device or use benzene, thinners, etc. to wipe it during cleaning.
- Do not open, repair or modify the device yourself.

**WARRANTY CARD OR WARRANTY LETTER  
ONE YEAR LIMITED WARRANTY  
WATER FILTRATION DEVICE P-08L("PRODUCT")**

**Model:**  
**Serial Number:**  
**Customer Name:**  
**Date of Purchase:**

("OWNER")

**What This Warranty Covers:**

Commencing with the date of purchase of the Product and continuing for a period of one year, if manufacturing defects in the Product cause the Product to not operate properly for its intended use, then subject to the exclusions, conditions, and limitations contained herein, COWAY at its sole option will repair or replace the Product. Decisions as to the extent of repair or replacement required will be made solely by COWAY.

The remedy under this Warranty is available only for that portion of the Product exhibiting defects at the time of the warranty claim. The replacement Product as well as any remaining original Product will be warranted only for the original one year warranty period. This limited warranty applies only to Product used for an application specified by COWAY for the Product and applied in strict accordance with COWAY published specifications in effect at the time of application. IF PRODUCT IS USED FOR OTHER THAN ITS INTENDED PURPOSE, IT IS SOLD AS IS AND WITHOUT ANY EXPRESS OR IMPLIED WARRANTIES, INCLUDING OF MERCHANTABILITY OR FITNESS FOR A PARTICULAR PURPOSE.

**What This Warranty Does Not Cover:**

This Warranty warrants that the Product will be free from manufacturing defects which affect the ability of the Product to operate for its intended use; it is not a warranty that the Product will never require repairs or to undertake responsibilities, liabilities or obligations other than those specifically identified in the preceding section. COWAY is not responsible or liable for personal injury or property damage of any kind, even if arising from a breach of this Warranty.

**Limitations and Exclusions:**

TO THE EXTENT PERMITTED BY APPLICABLE LAW, COWAY DISCLAIMS ANY OTHER WARRANTY EXPRESS OR IMPLIED, THAN THAT GUARANTEES FOR HEREIN. THIS WARRANTY IS IN LIEU OF AND EXCLUDES ALL OTHER WARRANTIES, PROVIDES, CONDITIONS AND REPRESENTATIONS, EXPRESS OR IMPLIED, ORAL OR WRITTEN, STATUTORY OR OTHERWISE, INCLUDING BUT NOT LIMITED TO ANY IMPLIED CONDITIONS OR WARRANTIES AS TO THE MERCHANTABILITY OR FITNESS FOR A PARTICULAR PURPOSE OF THE COWAY PRODUCT. SOME STATES DO NOT ALLOW LIMITATIONS ON HOW LONG AN IMPLIED WARRANTY LASTS, SO THE ABOVE LIMITATION MAY NOT APPLY TO YOU. COWAY DOES NOT AUTHORIZE ANY PERSON INCLUDING ITS REPRESENTATIVES, TO MAKE ANY REPRESENTATION OR TO OFFER ANY WARRANTY, CONDITION OR GUARANTY IN RESPECT OF THE PRODUCT OTHER THAN THIS WARRANTY. THIS LIMITED WARRANTY SHALL BE THE OWNERS SOLE AND EXCLUSIVE REMEDY AGAINST COWAY AND COWAY SHALL NOT BE LIABLE FOR ANY CONSEQUENTIAL, EXEMPLARY, SPECIAL, INCIDENTAL OR OTHER DAMAGES INCLUDING, BUT NOT LIMITED TO, LOSS OF PROFITS, AND LOSS OF USE, INCIDENTAL, CONSEQUENTIAL AND EXEMPLARY DAMAGES SHALL NOT BE RECOVERABLE EVEN IF THE REMEDIES OR THE ACTIONS PROVIDED FOR IN THIS WARRANTY FAIL OF THEIR ESSENTIAL PURPOSE. SOME STATES DO NOT ALLOW THE EXCLUSION OR LIMITATION OF INCIDENTAL OR CONSEQUENTIAL DAMAGES, SO THE ABOVE LIMITATION OR EXCLUSION MAY NOT APPLY TO YOU. COWAY SHALL NOT BE LIABLE FOR ANY DAMAGES WHICH ARE BASED UPON NEGLIGENCE, BREACH OF WARRANTY, STRICT LIABILITY OR ANY OTHER LEGAL THEORY OF LIABILITY OTHER THAN THE EXCLUSIVE LIABILITY SET FORTH IN THIS WARRANTY

**DEAR CUSTOMERS**

Thank you for using our **Coway Water Filtration Device**. Please be sure to read this user's manual to use and maintain your device correctly. If you experience any problems during use, you can refer to this user's manual to resolve them. This user's manual contains the product warranty, so please store it safely.

**CONTENTS**

**FOR INFORMATION**

- | 03 | SAFETY INFORMATION  
Danger  
Warning  
Caution
- | 05 | PARTS NAME
- | 06 | WATER FILTRATION PROCESS

**HOW TO USE**

- | 07 | INSTALLATION PRECAUTIONS
- | 08 | HOW TO USE  
To Drink Room-Temperature Water  
Large Volume Dispensing  
To Lock Room-Temperature Water

**MAINTENANCE**

- | 09 | INSTALLATION
- | 11 | CLEANING METHOD  
Cleaning the Storage tank
- | 14 | FILTER REPLACEMENT

**OTHERS**

- | 17 | TROUBLESHOOTING
- | 18 | SPECIFICATIONS
- | 19 | WATER FLOW DIAGRAM
- | 21 | WARRANTY CARD

- Please keep the User's Manual where it can be readily reached or found -

# FEATURES

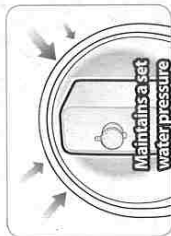
## 1 Continuous dispensing function

Turn the water dispensing lever 45° clockwise and lock it in place to conveniently dispense purified room-temperature water.



## 2 Maintaining a set water pressure

In regions with high water pressure, you can get source water at a set pressure to protect the inside of the device from high water pressure.



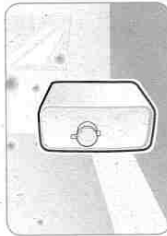
## 3 Sealed Storage tank to prevent secondary contamination

A separate sealed structure is used for the internal Storage tank to maintain hygiene and prevent secondary contamination by dust, insects, and other foreign matter.



## 4 Small, slim design

The small, slim design fits well even into narrow kitchen spaces.



## 5 Dust-free filtering system

Comes equipped with a Plus Inno-sense filter to minimize the number of dust particles entering the storage tank.



### Limitations on Implied Warranties:

Any implied warranty of merchantability or fitness for a particular purpose or use, shall be limited to the duration of the foregoing express written warranty.

### Conditions of Warranty:

COWAY's continuing liability under this Warranty is conditioned upon the following :

- a) The defect or damage is not caused by or is the result of : abnormal use or conditions; improper storage, unauthorized modifications or repair; misuse, neglect, accident, alteration, improper installation or other acts that are not the fault of Coway or the manufacturer of the product or that are not covered by the manufacturer's warranty;
- b) The Product has not been altered, modified or repaired without prior written approval of COWAY;
- c) The OWNER has notified COWAY in writing of any failure of the Product covered by this Warranty within thirty (30) days following such failure;

- d) There has been no misuse, abuse or negligence with respect to the Product on the part of the OWNER.

### Waiver:

COWAY's failure at any time to enforce or rely upon any of the terms or conditions stated herein shall not be construed to be a waiver of its rights hereunder.

### Obtaining Warranty Service and OWNER'S Duties:

If the Product fails to operate for its intended purpose, then notify Coway or its Representative Agency within 48 hours or within the next business day after discovery of any defect in the Product. The OWNER must give written notice to COWAY no later than thirty (30) days after a defect is discovered or should by reasonable diligence have been discovered. Claims under this Warranty will require proof of purchase by the OWNER.

<b>COWAY</b>
Add : Woongjin Coway co., Ltd. 136-23, Yuguimgoksa-ro, Yugu-eup, Gongju-si, Chungcheongnam-do, Korea Tel. : 82-1588-5100

<b>USA</b>
Add : Coway USA Inc. 4221 Wilshire Blvd. #210 Los Angeles, CA90010 Call center : (213) 386-3033 Fax : (213) 386-3032

<b>THAILAND</b>
Add : COWAY(THAILAND) CO., LTD. 75/104-106 Ocean Tower 2 38Fl Sni Sukhumvit 9(Wattana), Sukhumvit Road, Klongsoy Nua, Wattana, Bangkok 10110 HQ: 662-26172010 Call center: 66-2-261-0209

<b>MALAYSIA</b>
Add: COWAY (M) SDN BHD SUITE 6-3 & 6-4 LEVEL 6, WISMA UOAJI NO.21 JALAN PINANG 50450 KUALA LUMPUR Call center: 1-800-888-111

<b>GERMANY</b>
Add : Aqua-National GmbH & Co.KG. Nickelsrase 21, 33378 Rheda-Wiedenbrck Tel. : +49-5244-9396762

001

9234417



**COWAY LOVES THE PLANET**  
This paper can be recycled.

# coway

# coway

[www.coway.com](http://www.coway.com)

## Water Filtration Device P-08L

- For your safety and proper use of the product, please read this User's Manual before use.
- Warranty card is included in this User's Manual.
- English

